



# BD FACSDuet™ Sample Preparation System

Discover a powerful new level of performance to move the pace  
of your lab forward



# THE DIFFERENCE IS A LAB IN RHYTHM



## Efficient

- 20% reduction in total process time\*
- 100% reduction of error-prone steps
- 75% reduction in hands-on time\*\*
- Minimised staff training time



## Standardised

- Preprogrammed preparation methods
- Traceability of specimen, reagents and samples with 50% more points of traceability



## Flexible

- Ability to create custom preparation methods
- Modular design to adapt to evolving laboratory needs
- Automated on-board cocktail preparation

\* vs manual for 20x BD Multitest™ 6-color TBNK samples + BD Trucount™ when integrated with BD FACSLyric™

\*\* when running 20x BD Multitest 6-color TBNK + BD Trucount assays when integrated with BD FACSLyric™



---

The BD FACSDuet™ Sample Preparation System combines automation, simplicity and consistency. Physically integrated with the BD FACSLyric™ flow cytometer, this complete walkaway sample-to-answer solution is helping to drive your laboratory to higher productivity.

The system integrates seamlessly into your laboratory workflow providing standardisation with flexibility to meet your needs. Designed as a modular system, with an intuitive and easy-to-use touchscreen software interface, the BD FACSDuet™ changes the way you have always experienced sample preparation and flow cytometry.

---





## Efficient because....

### Reduces the time to results and increases workflow consistency

- Handling of up to 3 carriers and worklists at the same time to increase specimen throughput
- 75% reduction in hands-on time creates lab capacity for handling increasing work volume
- Physically integrated with the BD FACSLyric™ flow cytometer for automated transfer of ready-to-acquire samples providing a true walkaway solution

### Reduces variability and errors

- Standardised protocols and automated specimen and reagent pipetting reduce variability in sample preparation, eliminating critical error prone steps and leading to more accurate results

\* vs manual when 2 people are dedicated to the task

### Minimises manual inputs required from users

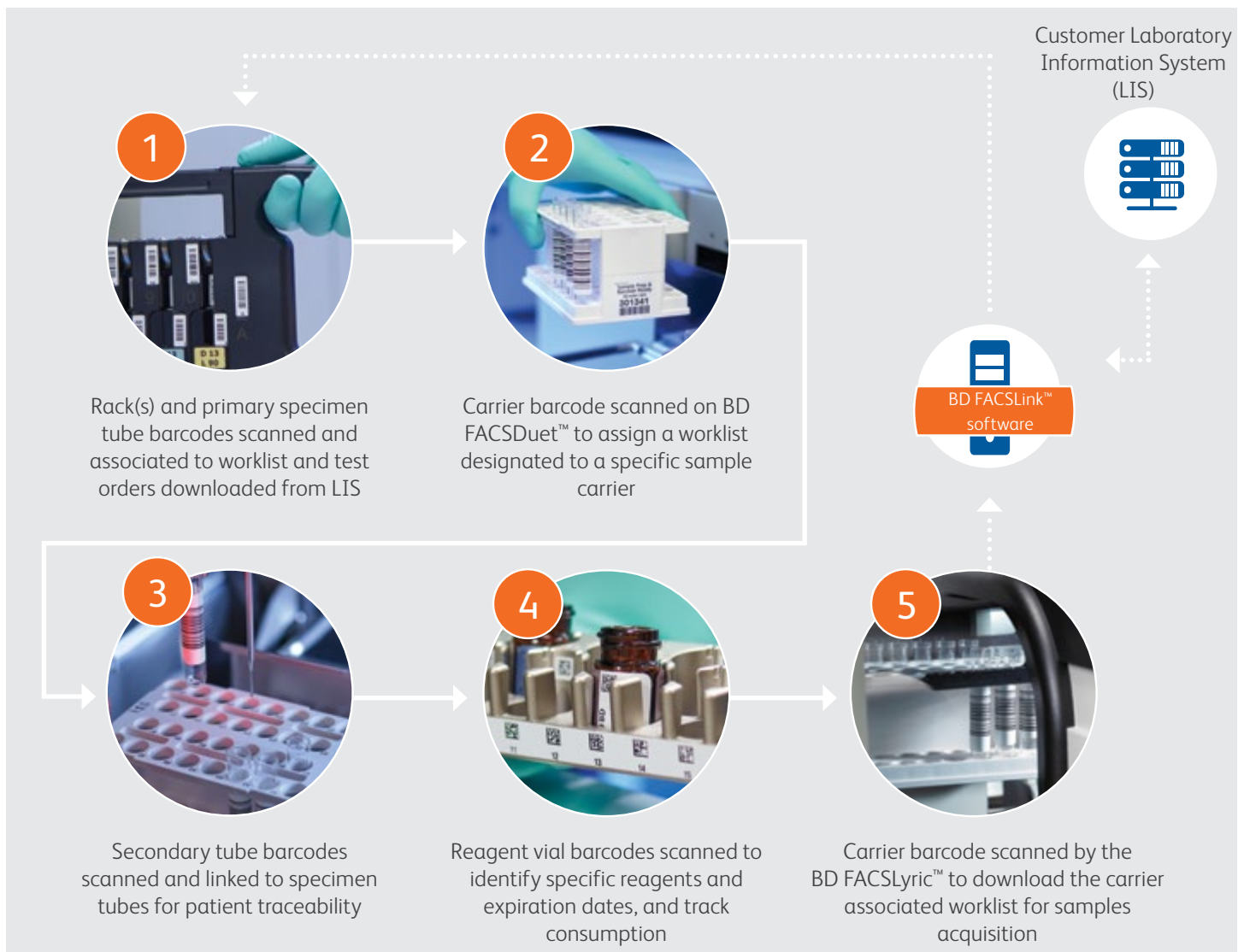
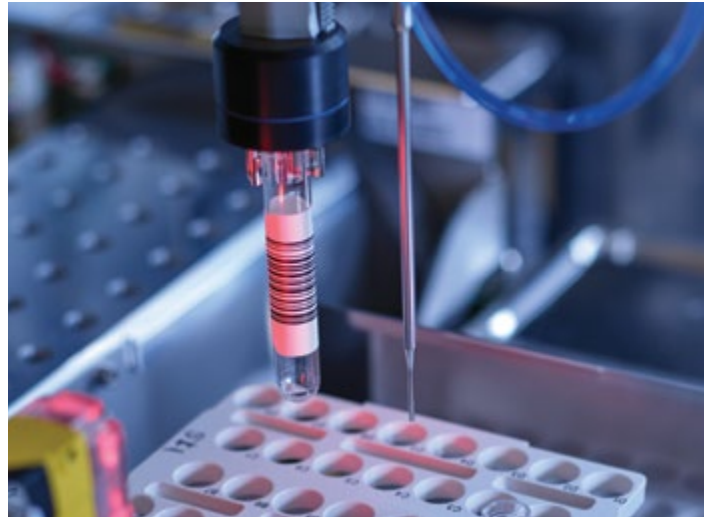
- Bidirectional communication with the laboratory information system (LIS) automates worklist preparation and eliminates the risk of generating errors when manually transcribing data
- Smart barcode reading enables automated worklist(s) tracking
- Cocktailing functionality automates pipetting steps (80% reduction in hands-on time\*), and the tracking of reagents and reagent cocktails

### Minimises user training with intuitive touchscreen interface

# Standardised because...

## Enables consistent workflows

- Complete traceability of specimens, samples, reagents and worklists throughout the entire workflow
- Preprogrammed preparation methods reduce variability and opportunities for errors
- Automated cocktailing functionality eliminates manual steps, ensuring consistent and error-free creation of multicolor reagents





## Flexible because....

- Allows users to create their own preparation methods
- Accommodates 22 different specimen tube types
- Accommodates various reagent vial sizes for a total of 46 reagents on-board
- Allows users to create reagent cocktails with up to 45 unique reagents.
- Delivers an upgradable and modular design to adapt to the evolving needs of each laboratory
- Delivers optional on-board cocktailing functionality



# Closing thoughts *(from actual users)*...

*“What’s the potential impact of the BD FACSDuet? It removes our manual processes, increases our efficiency and throughput, and gives us control in standardization of processes. It’s a controlled environment.”*

*Mr. D. Bloxham - Principle Biomedical Scientist - HODS  
Cambridge University Hospital NHS Trust*

*“At last, a fully integrated end-to-end walkaway solution, which is going to make our lives significantly easier. It reduces errors ....., leading to increased productivity and efficiency, .... provides a comprehensive fully audit-able account of the whole process. .... creates capacity to allow us to meet our key performance indicators.”*

*Dr. T. Farren - Head of immunophenotyping (SIHMDS)  
Barts Health NHS Trust - The Royal London Hospital*

*“I require all the monoclonal antibodies used, the ancillary reagents, tubes, the QC materials to be linked to an exact patient... this is an essential laboratory process but it’s also mandatory in order to maintain ISO15189 accreditation.”*

*Mr. C. Scott - Lead Biomedical Scientist, Immunology Dept.  
Barts Health NHS Trust - The Royal London Hospital*

BD FACSDuet™ and BD FACSLyric™ are CE marked in compliance with the European In Vitro Diagnostic Medical Device Directive 98/79/EC.

BD FACSLyric™ is a Class 1 Laser Product

Sample preparation for user defined protocols and cocktail functions have not been validated for IVD use, and require validation by the user

X23-20040-01

BD - Europe, Terre-Bonne Park - A4, Route de Crassier -17, 1262 Eysins, Switzerland

[bdbiosciences.com/eu](http://bdbiosciences.com/eu)

