



# BD Horizon™ Dri Chroma

Experience the Brilliance of a complete panel in a single tube





## Greater workflow **efficiency**\*

- Proprietary technology to dry down up to 5 BD Horizon™ Brilliant dyes in one tube reduces the need for manual pipetting steps in your laboratory
- Improved ease-of-use by providing up to 14 parameters in a single tube format
- Reduced time to results with a streamlined workflow: simply resuspend the dried reagents, then add your sample, with no need for cocktailing



## Greater **standardization**\*

- All-in-one tube format reduces operator errors due to liquid pipetting and cocktailing
- Batch manufacturing of dried panels provides ideal format for inter- and intra- laboratory assays, resulting in improved data reproducibility
- Reduced day-to-day variability, resulting in more consistent results



## Greater **stability**\*

- 1-year shelf life when stored at room temperature (20-25°C)
- Pouched in airtight, resealable, light-resistant foil bags
- Resuspension of dried reagents with BD Horizon™ Brilliant Stain Buffer or BD Horizon™ Brilliant Stain Buffer Plus ensures minimal dye-to-dye interaction during staining



## Greater **flexibility**\*

- Evaluation tubes included with every order ensure panel performance before scale-up
- Dedicated BD Customs Technology Team available to provide panel development assistance for research use only (RUO) applications
- Custom packaging options available to meet your lab's specialized needs

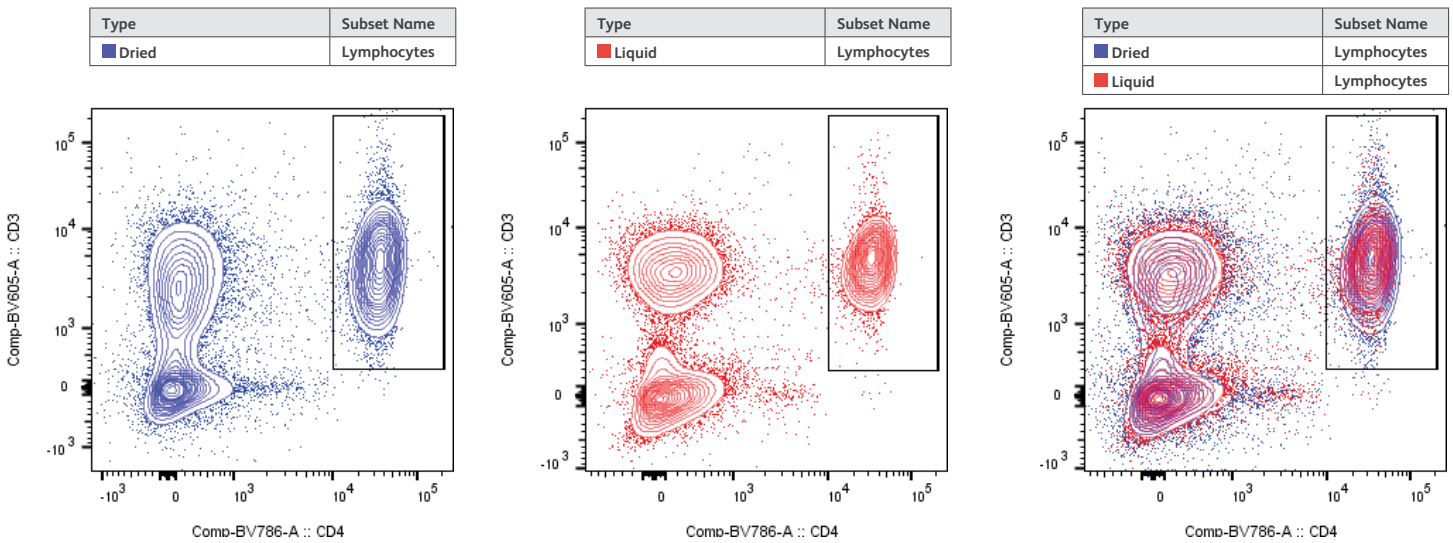
\*vs liquid reagents

For Research Use Only. Not for use in diagnostic or therapeutic procedures.

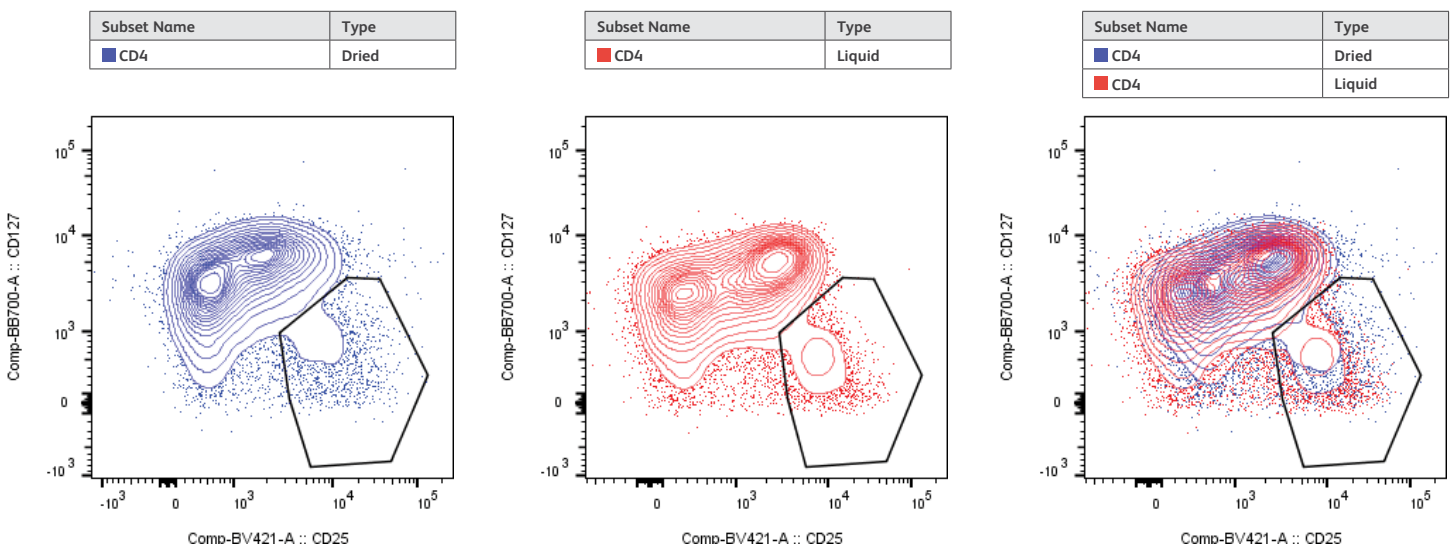
# BD Horizon™ Dri Chroma multi-color panels

## Performance data

BD Horizon™ Dri Chroma multi-color panels show comparable performance to liquid reagents as demonstrated in Figures 1 and 2. The results are taken from a multi-color panel containing 5 BD Horizon™ Brilliant dyes used for the identification and characterization of regulatory T Cells (Tregs) in human PBMCs. The staining observed with the dried reagents (Blue data points) is comparable to the staining observed with liquid reagents (Red data points), which is summarized in the overlay plots (right plots in Figures 1-2).



**Figure 1.** Lymphocytes (CD3 vs. CD4) BD Horizon™ Dri Chroma vs. liquid reagents



**Figure 2.** CD4+ subset (CD127 vs. CD25) BD Horizon™ Dri Chroma vs. liquid reagents

# BD is raising the bar on custom solutions for flow cytometry

The BD Custom Technology Team (CTT) is a dedicated and specialized contract research group with extensive experience in flow cytometry panel development. BD CTT offers fully customizable panels and packaging, including custom labels and barcodes. With the launch of BD Horizon™ Dri Chroma, BD CTT allows your lab to spend less time on manual pipetting, and more time on advancing your research.

For more information, please visit:

Custom Multicolor Panels link within the Custom Reagents tab on [bdbiosciences.com](http://bdbiosciences.com) or contact the BD custom team at **[BDB\\_Custom\\_Orders@bd.com](mailto:BDB_Custom_Orders@bd.com)**

For Research Use Only. Not for use in diagnostic or therapeutic procedures.

\* Contact the BD Biosciences custom team at [pmgcttinbox2@bd.com](mailto:pmgcttinbox2@bd.com) for multicolor cocktails containing >1 BD Horizon Brilliant dye as well as lot-matched compensation controls for tandem dyes.

Cy™ is a trademark of GE Healthcare.  
Alexa Fluor® is a registered trademark of Life Technologies Corporation.

23-21581-01

BD Life Sciences, San Jose, CA, 95131, USA

**[bdbiosciences.com](http://bdbiosciences.com)**

BD, the BD Logo and all other trademarks are property of Becton, Dickinson and Company. © 2019. All rights reserved.

