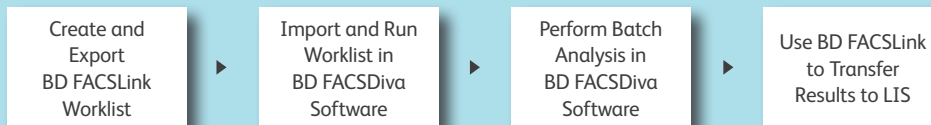


Quick Reference Guide for Using Custom Panels with BD FACSDiva™ Software and the BD FACSLink™ LIS Interface

This guide contains instructions for using custom panels* created in BD FACSDiva™ software (v6.1.3 and later) with the BD FACSLink™ laboratory information system (LIS) interface.

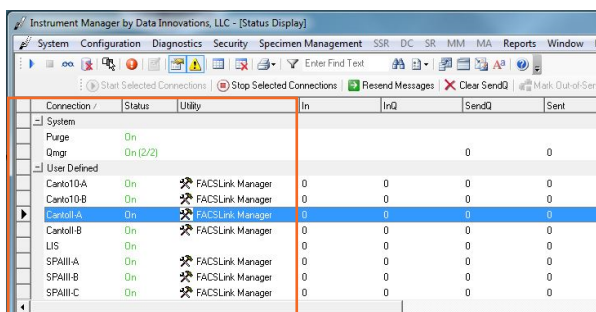
Workflow Overview



Creating and Exporting a Worklist in BD FACSLink (Instrument Manager) Software

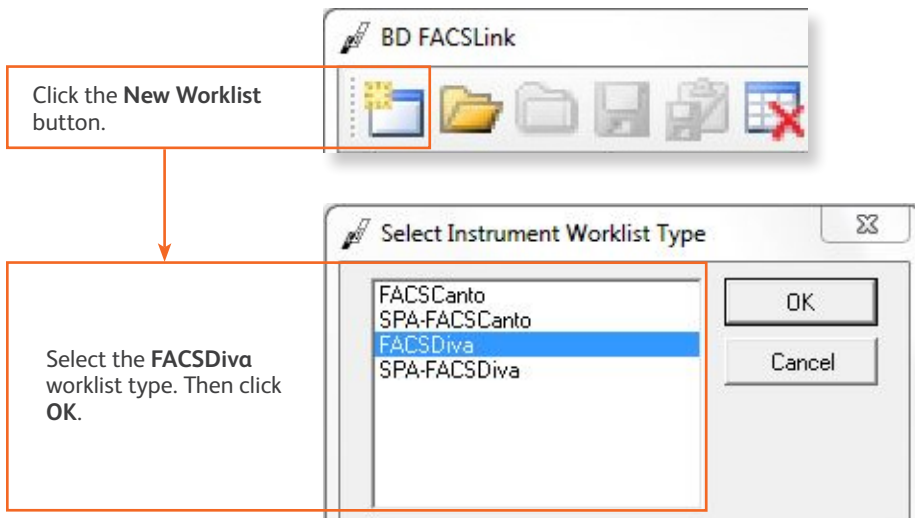
- 1 Start Instrument Manager software and log in.
- 2 Open BD FACSLink by clicking **FACSLink Manager** under the **Utility** tab for the appropriate connection.

Enter your connection here _____



Select the connection you want.

- 3 Create a new worklist.



* For Research Use Only.
Not for use in diagnostic or therapeutic procedures.

- 4 Enter or scan in the **Specimen ID**, then press **Tab**. Select the **Panel**, if needed, and enter the **Carousel ID**, then press **Enter**.

| Specimen ID | Sample Name | Case Number | Panel | Carousel ID | Start / End | Unique Carousel ID | Tube Size | Primary Rack Position |
|-------------|-------------|-------------|-------------|-------------|-------------|--------------------|-----------|-----------------------|
| Donor A | | Donor A1 | 7c IP panel | 1 | TBD | TBD | N/A | N/A |

- 5 Export and save the worklist.

Click the **Export** button on the tool bar. Select **Export Entire Worklist**. Name and save the worklist to the appropriate location on the (P:) drive.

Enter your location here _____

- 6 Exit BD FACSLink software.

Importing and Running a BD FACSLink Worklist in BD FACSDiva Software

- 1 Start BD FACSDiva software and log in.
- 2 Select **File > Import > Worklist**.

Open the location on the (P:) drive where you saved the worklist previously. Select the worklist and then click **Import**.

- 3 Select **Carousel > Carousel Setup** and verify the settings.

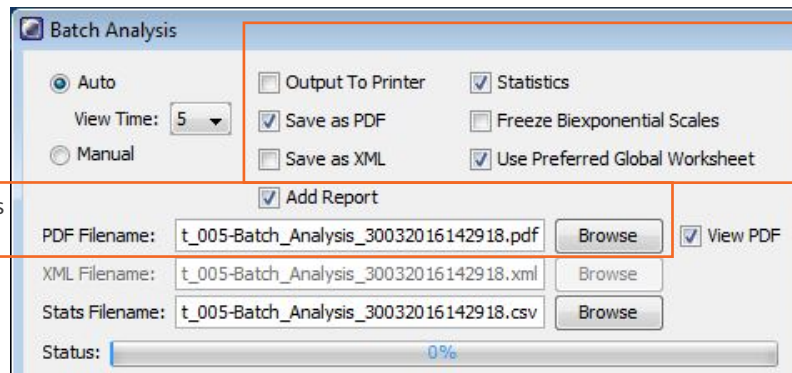
Enter an appropriate **Carousel ID**.

Verify that the **Run Settings** and the **Tube Pressurization Error Handling (Current Run)** settings are what you want.

- 4 Run the worklist.

Performing Batch Data Analysis in BD FACSDiva Software

- 1 In the **Browser**, right-click the experiment containing the data you want to analyze and select **Batch Analysis**.
- 2 Make the appropriate selections in the **Batch Analysis** dialog, then click **Start**.



Save PDF and statistics files in the default locations.

To export statistics, select **Save as PDF** and **Statistics** (one CSV file containing exported statistics from all analyzed tubes).

- 3 If you need to adjust gates during batch analysis, click **Pause**, adjust the gates, and then click **Continue**.

Transferring Results to the LIS

- 1 Start Instrument Manager software and log in.
- 2 Open BD FACSLink by clicking **FACSLink Manager** under the **Utility** tab for the appropriate connection.

Enter your connection here _____

- 3 Display the **BD FACSLink** window and transfer the results.



Click the **Transfer Diva Results** button, select the statistics file to transfer, and click **Open**.

- 4 Exit the software.

This material is for training purposes.
23-15334-01

BD Biosciences, 2350 Qume Drive, San Jose, CA 95131, USA

bdbiosciences.com

BD, the BD Logo, FACSDiva, and FACSLink are trademarks of Becton, Dickinson and Company or its affiliates.
©2020 BD. All rights reserved.

