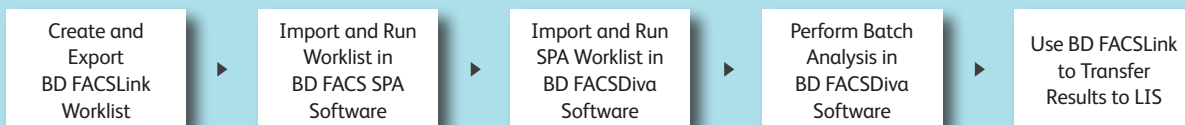


Quick Reference Guide for Using Custom Panels with BD FACSTM SPA and BD FACSDiva™ Software and the BD FACSLink™ LIS Interface

This guide contains instructions for using custom panels* created in BD FACSDiva™ software (v6.1.3 and later) and BD FACSTM SPA software (v3.0.1 and later) with the BD FACSLink™ laboratory information system (LIS) interface.

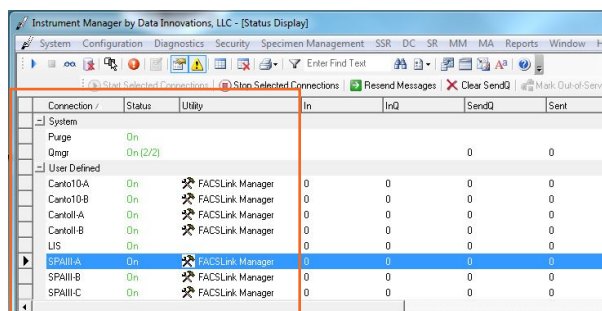
Workflow Overview



Creating and Exporting a Worklist in BD FACSLink (Instrument Manager) Software

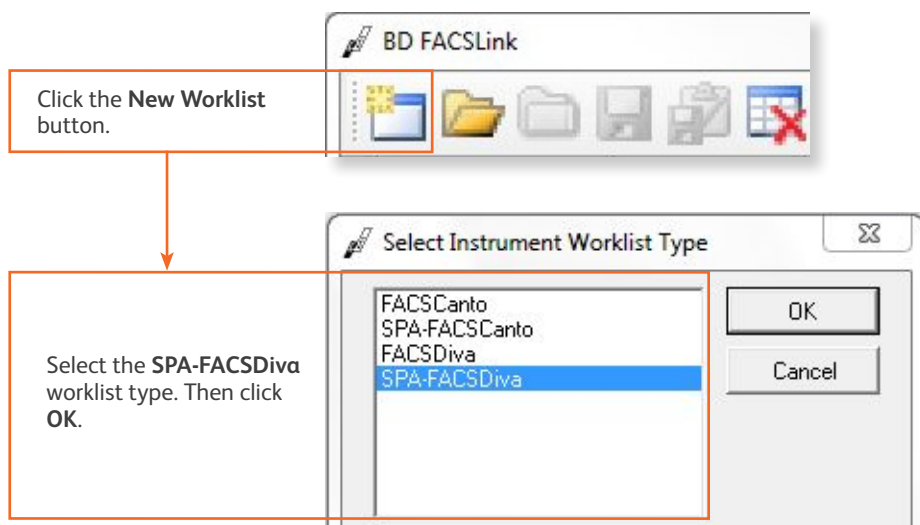
- 1 Start Instrument Manager software and log in.
- 2 Open BD FACSLink by clicking **FACSLink Manager** under the **Utility** tab for the appropriate connection.

Enter your connection here _____



Select the connection you want.

- 3 Create a new worklist.



* For Research Use Only.
Not for use in diagnostic or therapeutic procedures.

- 4 Enter or scan in the **Specimen ID**, then press **Tab**. Select the **Panel**, if needed, and enter the **Carousel ID**, then press **Enter**.

Specimen ID	Sample Name	Case Number	Panel	Carousel ID	Start	End	Unique Carousel ID	Tube Type	Primary Rack Position
Donor A		Donor A1	7c IP panel		TBD	TBD	1	BD Vacutainer	TBD

- 5 Export and save the worklist.

Click the **Export** button on the tool bar. Select **Export Entire Worklist**. Name and save the worklist to the appropriate location on the (S:) drive.

Enter your location here _____

- 6 Exit BD FACSLink software.

Importing and Running a BD FACSLink Worklist in SPA Software

- 1 Start SPA software and log in.
- 2 Select **File > Open Prep Worklist**.

Open the location on the (S:) drive where you saved the worklist previously. Select the worklist and then click **Open**.

- 3 Select the reagent rack ID you want.

7c IP panel rack

- BD MultiTEST Control
- BD TriTEST
- BD TriTEST Control
- BD TriTEST 3-Tube T cell
- BD TriTEST 3-Tube T cell Con
- BD MultiReagent Control
- BD 6 Color
- 7c IP panel rack

- 4 Click **Run**.

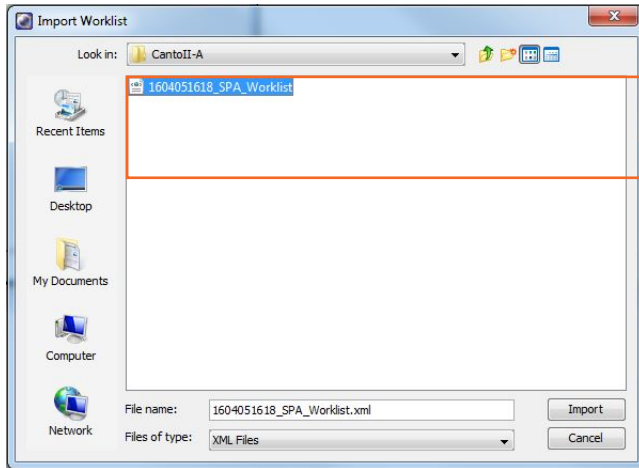
- 5 A dialog will open prompting you to save the worklist. Name and save the worklist to the appropriate location on the (P:) drive.

Enter your location here _____

- 6 Close the worklist and perform the SPA shutdown procedure, as needed.

Importing and Running a SPA Worklist in BD FACSDiva Software

- 1 Start BD FACSDiva software and log in, if needed.
- 2 Select **File > Import > Worklist**.

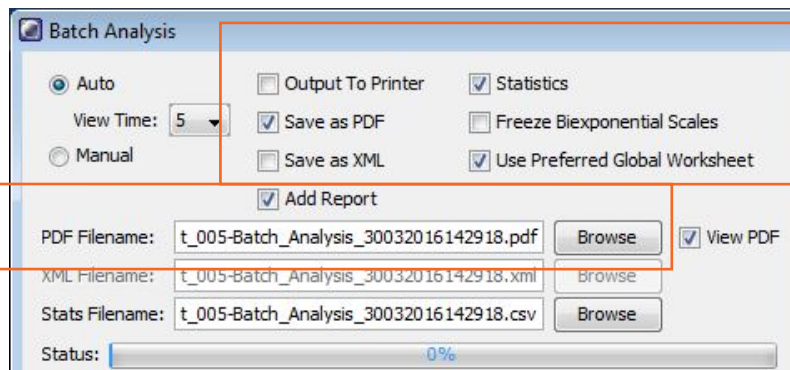


Open the location on the (P:) drive where you saved the worklist previously. Select the worklist and then click **Open**.

- 3 Verify the settings in the **User Preferences** dialog, if needed.
- 4 Select **Carousel > Carousel Setup** and verify the settings.
- 5 Run the worklist.

Performing Batch Data Analysis in BD FACSDiva Software

- 1 In the **Browser**, right-click the experiment containing the data you want to analyze, and select **Batch Analysis**.
- 2 Make the appropriate selections in the **Batch Analysis** dialog, then click **Start**.



Save PDF and statistics files in the default locations.

Select to save as a PDF and to export statistics (one CSV file containing exported statistics from all analyzed tubes).

- 3 If you need to adjust the gates during batch analysis, click **Pause**, adjust the gates, and then click **Continue**.

Transferring Results to the LIS

- 1 Start Instrument Manager software and log in.
- 2 Open BD FACSLink by clicking **FACSLink Manager** under the **Utility** tab for the appropriate connection.

Enter your connection here _____

- 3 Display the **BD FACSLink** window and transfer the results.



- 4 Exit the software.

This material is for training purposes.
BD FACST[™] SPA software is CE marked For In Vitro Diagnostic Use.
23-15333-01

BD Biosciences, 2350 Qume Drive, San Jose, CA 95131, USA

bdbiosciences.com

BD, the BD Logo, FACS, FACSDiva, and FACSLink are trademarks of Becton, Dickinson and Company or its affiliates.
©2020 BD. All rights reserved.

